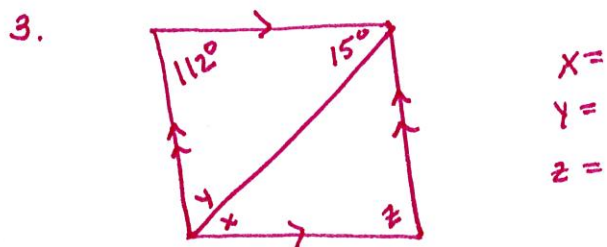
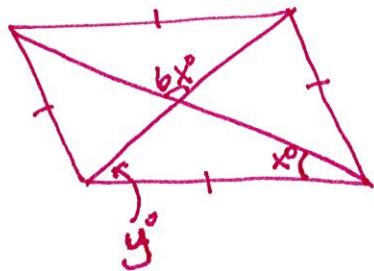


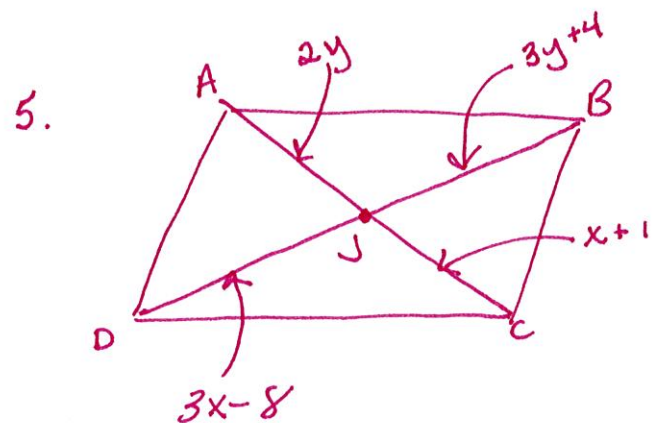
Quiz Review #2

1. What are the characteristics of a rhombus?

2. Find
 $x =$
 $y =$



4. What do you know about diagonals of parallelograms?



ABCD is a parallelogram

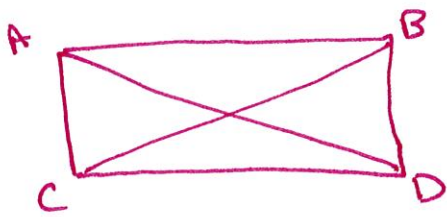
$x =$

$y =$

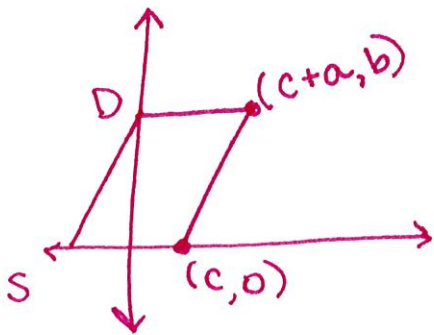
#6 a.) parallelograms have consecutive angles that are _____

b.) draw parallelogram RSTU

#7) What do you know about diagonals of rectangles.



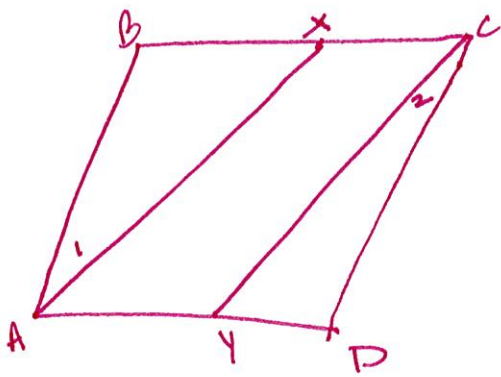
ABDC is a rectangle,
find the length of
AD, given $BC = 6x + 11$ and
 $AD = 2x - 1$.



$$D = (\quad , \quad)$$

$$S = (\quad , \quad)$$

#9)

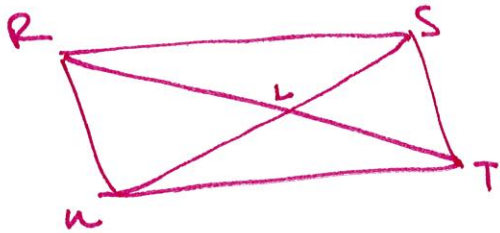


Given: ABCD is a parallelogram
 $\angle 1 \cong \angle 2$

Prove: $\overline{AX} \cong \overline{CY}$

#10 Given: RSTU is a 

Prove: $\triangle RLU \cong \triangle TLS$



#11 Review today's notes on how to prove a quadrilateral on a coordinate plane is a parallelogram.

#12 List the characteristics of a square.